



# New expanded website offers you so much more!

Specialist supplier of high quality industrial and hazardous area electrical and related products

LEARN MORE

**Ex Express Solutions**  
Certified Junction Box Assembly

IECEx Ex

VIEW EXPRESS SOLUTIONS

50 YEARS

**Project Supply Solutions**

PROJECT MANAGEMENT PRODUCT DELIVERY

VIEW PROJECTS

**Get in touch**

CONTACT US

**Products**

CABLE ONSHORE & OFFSHORE

CABLE ACCESSORIES

CABLE SUPPORT SYSTEMS

CONTROL GEAR & POWER

INSTALLATION EQUIPMENT

LIGHTING & LAMPS

**W**elcome to this edition of the **JT Day newsletter**, one in which we're delighted to announce the **revitalisation of our website**.

In addition to giving a more extensive coverage to the type of support we give to industries requiring high quality electrical products for industrial and hazardous areas, we have highlighted the applicable products we can supply to various industries - Oil &

Gas, Petro Chemical, Manufacturing, Mining and the Marine Industry.

It demonstrates how JT Day is far more than just a supplier of products but how clients can have their product supply managed through our systems of procurement and supply to meet the pace of requirement so that the client receives a highly efficient supply chain solution tailored specifically to their needs.

In addition to these services JT Day has

greatly expanded its **EXpress Solutions** - supplying junction boxes and enclosures assembled and or customised to meet specific client requirements as well as offering a comprehensive labelling service.

The website is far more detailed in relation to products and services, is easier to navigate, and suitable for accessing via mobile devices.

## New products just released

**I**f there's one thing that manufacturers supplying products for the oil and gas industry have in common, it's their enthusiasm for innovation.

The ingenuity and increased functionality of new product releases seems to have no bounds.

As a consequence we're featuring several within this newsletter and we'll be displaying them at the Australian Oil and Gas Exhibition being held at the Perth Convention and Exhibition Centre February 24 – 26.

We'll be showing them on our usual display Stand, M5 so we hope you'll

come and say 'howdy' and take a look at them.

Next year's Oil and Gas show is expected to attract considerable interest as there's a lot of talk about the ramping up of LNG exports that is occurring, and the impact this will have on the national economy.





# New products

## A handy mat reduces electrical hazard

**A**ustralian manufacturer, **Lightning Protection International** has come up with a useful means of coping with electrical discharge events, a significant hazard to personnel and equipment via earth potential rise (EPR).

The EPR could be caused by faults in an electrical substation, power plants or high-voltage transmission lines, or of course, via a lightning strike.

In statistical terms in Australia, lightning poses a greater threat to individuals than almost any other natural hazard: 5-10 deaths and in the region of 100 injuries per year.

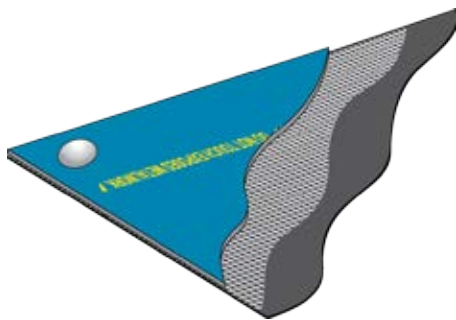
The item developed is the EPR Safety Mat, a simple means of mitigating Step and Touch Voltage hazards via a unique three-layer design.

The three layers have different roles:

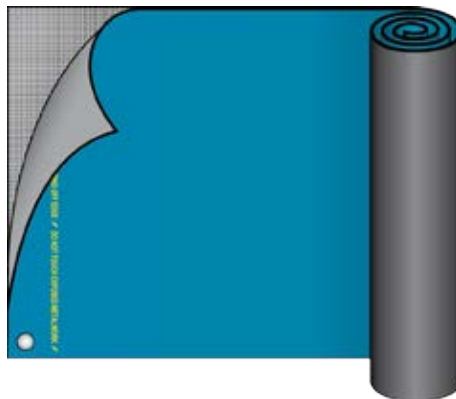
The central electrically conductive layer equalises the electrical potential across the mat, the upper layer insulates while the lower layer is an electrically - conductive elastomer that protects the central layer while providing electrical continuity to it.

The EPR Safety Mat's layers are sufficiently flexible to enable the mat to be rolled and unrolled as required in temporary and semi-permanent applications. They can also be joined electrically to create longer versions as required.

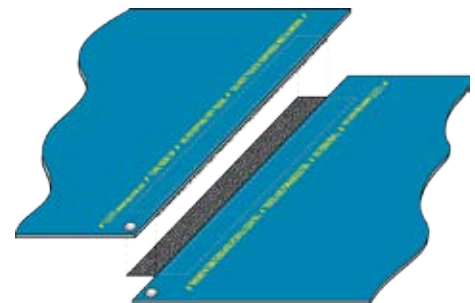
Given the relatively low cost of the EPR Safety Mat to the cost of downtime, hospitalisation, or the death of a person, there's a very good argument for having these either as a permanent fixture or for placing where electrical repair work is to be carried out.



Three layer construction and corner eyelet of the EPR Safety Mat



The EPR Safety Mat's unique three-layer design and rollability for ease of portability



The EPR Safety Mat can easily be rolled and unrolled as required – and can be joined together in multiple sections

## Chalmit's Scotia low energy floodlight

**C**halmit, the world's first lighting manufacturer to supply LED lighting systems for harsh and hazardous area locations, has released the Scotia Ex, a low energy LED 'instant on' floodlight that is claimed to be capable of delivering 110,000 maintenance free hours when used at a mean 25°C.

The unit has been designed to give high output lighting in extreme temperatures with a range of -50°C to +55°C.

The Scotia Ex has been designed specifically for applications where moisture, dirt or dust are present.

The floodlight is highly vibration resistant and can be used in locations where flammable vapours, gases or combustible dusts exist - classification Zone 1 and Zone 21.

The luminaire has an aluminium alloy enclosure with stirrup mounting bracket and is available in four output variants: 7,182lm, 8,362lm,10,590lm,11,560lm having 90W,105W,110W and 125W power consumption respectively.

These low power consuming luminaires are considerably more economical to use than traditional HID lamps.



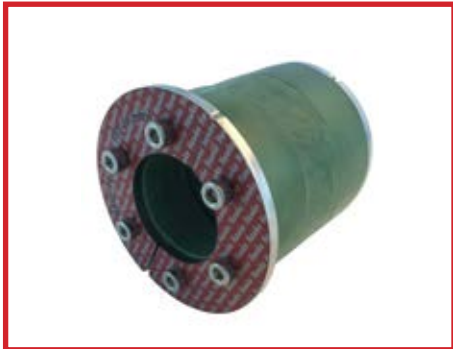




# New from Hawke Transit Systems

**B**eing a national distributor for Hawke Transit Systems rarely has a dull moment as this highly innovative company has a steady stream of new product developments.

Among its latest is the HRST round sealing



system, a system for a single cable or pipe. The system is very easy to install and can be retrofitted to existing cables and pipes as the HRST is supplied as an open frame.

The HRST does not require any insert blocks. This facilitates a much larger sealing range, allowing the systems to accept much larger cables and pipes - ranging from 4mm to 170mm compared to the standard HRT frames.

One of the key benefits is that the requirement for on-site modifications can be eliminated.

The HRST range will fit and seal within standard pipe sizes. For example the HRST - 40/17 has an external diameter of 40mm. It can accommodate and seal a cable or a pipe or tube from 17mm to 24mm.

Hawke Transit Systems has also developed the HRST 2H and 4H. These HRST frames are designed to seal two or four different small cables in the same round penetration. As an example, the HRST 40 - 4H D12 with an external diameter of 40mm allows you to seal four cables with diameters between 8mm and 12mm.

## Better way to connect low power cable

**H**awke International has released a revolutionary system for allowing safe and quick live mate and de-mating of signal and low power cable in hazardous areas.

The InstrumEx connector available in two sizes: 4-way and 9-way options will accept cores ranging between 0.5mm<sup>2</sup> and 2.5mm<sup>2</sup> and can operate up to a maximum current of 10A (AC1) at 250V AC and 2.5A (DC1) 60V DC.

There's also an 8-way option, designed primarily for Ethernet applications.

This will accept cores ranging between 0.14mm<sup>2</sup> and 0.37mm<sup>2</sup> and can carry 1A (AC1) at 60V AC and 0.5A (DC1) 60V DC.

The InstrumEx connectors include an integral Hawke cable gland for easy termination of both armoured and un-armoured cables.



## Wide range of applications for innovative mini marker light

**U**K based, Wolf Safety Lamp Company, one of the world's longest established manufacturers of portable and temporary lighting for use in potentially explosive atmospheres, has come up with an innovative marker light.

Called the Wolf Markerlite, this is a self-contained, highly visible LED visual indicator for highlighting the position of personnel or hazards in dark or reduced visibility environments.

The Markerlite has been designed for identifying personnel by being easily attached to protective headwear or clothing or to attach somewhere for identifying escape routes, equipment or hazards.

Two coin primary cells power an extra bright 'fitted for life' LED light, available in red, white or amber. It can be used as a flashing light that gives up to 65 hours output or static (up

to 25 hours output).

It gives a wide angle beam of 180 degrees, making it visible from front and sides.

These units can be securely fixed and left in position for extended periods of time to continuously highlight something and easily mounts on a headband strap.

Weighing just 23 grams and less than 37mm in diameter with batteries, makes them an effective addition to PPE equipment.

The Markerlite is drop and impact resistant, dust tight and can take immersion in water up to 1 metre.

They're CE marked to the ATEX directive and IECEx certified for safe use in potentially explosive zone 1 gas and zone 21 dust atmospheres.



# Extensive audit gives us the Achilles seal of approval



**J**T Day has extended its Achilles community footprint with an extensive Audit recently completed.

In addition to our ISO 9001:2008 accreditation, and as a further commitment of our supply chain capability to our customers, we engaged Achilles to perform a third party on-site audit of our QA/QC and HSE management systems.

The two day audit involved staff members from the company's quality, OH&S and management groups.

We're pleased to report that the procedure further validated the robustness of our processes and systems to ensure a consistent and compliant approach to our activities.

This translates to lower risks and greater confidence for our customers, that service levels, standards and customer expectations can be met and maintained globally.

Achilles is one of the world's leading global supply chain risk management companies.

For more information [www.achilles.com](http://www.achilles.com)

## 200km ride for charity



Photo courtesy of Woodside

**P**roduct manager, Grant Macpherson, the keen cyclist within our crew, joined Team Woodside to participate in the 'Ride to Conquer Cancer – Harry Perkins Foundation' held October 17-18.

The 200 km ride to Mandurah and return the next day, saw the team raise \$222,000, a useful contribution to the \$4.5million total raised by the 81 riders who participated in the event.

The minimum entry for each rider was \$2,500.

Grant said he was impressed by the organisation that went into the event and especially by the contribution made by various local government authorities which organised for the large contingent of riders to be waved through traffic lights.

This made for a much smoother ride that saved a lot of bunching up and chaos at intersections.

And as for being sore? No way – an easy ride for some!

## Our people

- **Deborah Lawton**, previously Receptionist and Administration Assistant has taken on a new role of Quality Assurance / HSE Co-ordinator.
- **Janet Talbot**, with a strong IT background has taken over Deborah's previous role.
- **Phillip Seboa**, based at JT Day's Brisbane quarters is now a proud Dad.



Media Support Services 1300 557 660

[www.jtday.com.au](http://www.jtday.com.au)

**Perth:**  
93 Inspiration Drive  
Wangara, WA 6065  
Tel: +61 08 9303 2248  
Fax: +61 08 9303 2446  
[perth@jtday.com.au](mailto:perth@jtday.com.au)

**Melbourne:** Level 4, Suite 13  
150 Albert Road  
South Melbourne, VIC 3205  
Tel: +61 03 9685 7522  
Fax: +61 03 9685 7599  
[melbourne@jtday.com.au](mailto:melbourne@jtday.com.au)

**Brisbane:**  
1/67 Bluestone Circuit  
Seventeen Mile Rocks, QLD 4073  
Tel: +61 07 3279 3535  
Fax: +61 07 3279 7840  
[brisbane@jtday.com.au](mailto:brisbane@jtday.com.au)